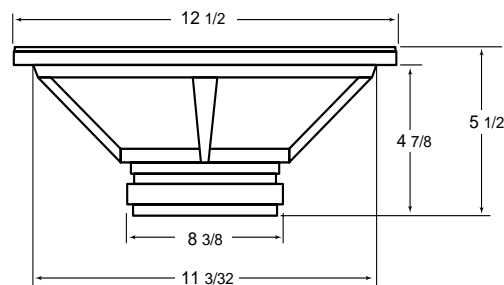


STROKER SERIES SUBWOOFERS

Stroker 12S

Stroker 12S Specifications

| | |
|---|---|
| Diameter: | 12" |
| No. of Voice Coils: | 1 |
| Sensitivity (1W @ 1m): | 92 dB |
| Power Handling: | 1000 W _{rms} |
| (cont. unclipped power per EIA RS-426A) | |
| Frequency Response: | 40 ~ 200 Hz |
| Nominal Impedance: | 4 Ω |
| Voice Coil Diameter: | 3" |
| Mounting Diameter: | 11 ¹ / ₈ " (28.30 cm) |
| Mounting Depth: | 4 ⁷ / ₈ " (12.38 cm) |

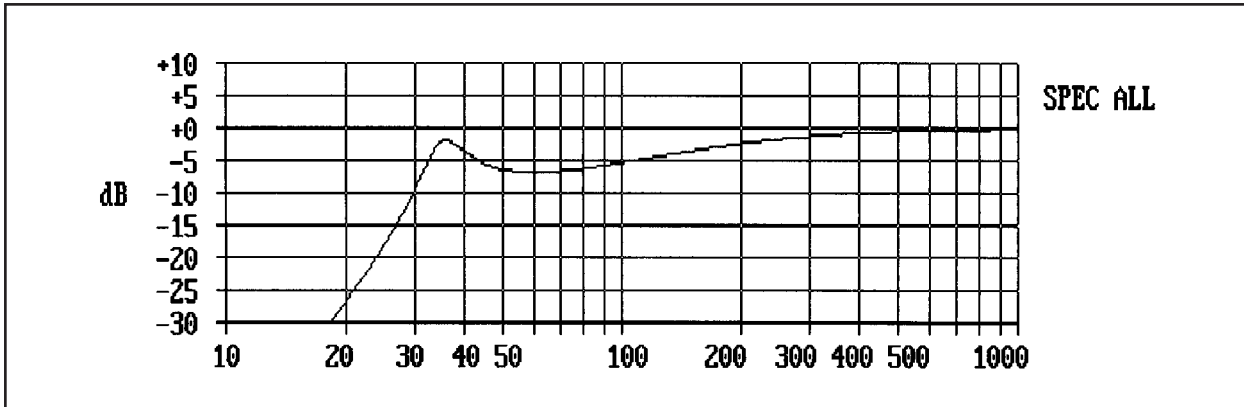


Stroker 12S Thiele-Small Parameters

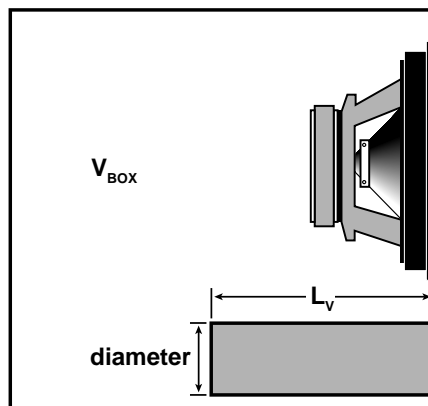
| | | |
|--------------------------------------|-----------|-----------------------------------|
| Free-Air Resonance: | f_s | 45 Hz |
| Total Q: | Q_{ts} | 0.230 |
| Mechanical Q: | Q_{ms} | 8.880 |
| Electrical Q: | Q_{es} | 0.231 |
| Compliance Volume: | V_{as} | .76 ft ³ |
| Maximum Excursion: (peak to peak) | X_{max} | 0.9" (±0.45") 23 mm (±11.5 mm) |
| Voice Coil DC Resistance: | R_{evc} | 3.4 Ω |
| Effective Cone Area: | S_d | 83.53 in ² |
| Driver Displacement: | | .15 ft ³ |

Stroker 12S Bass Reflex

Optimum Enclosure: 35 Hz tuning - Deep Bass

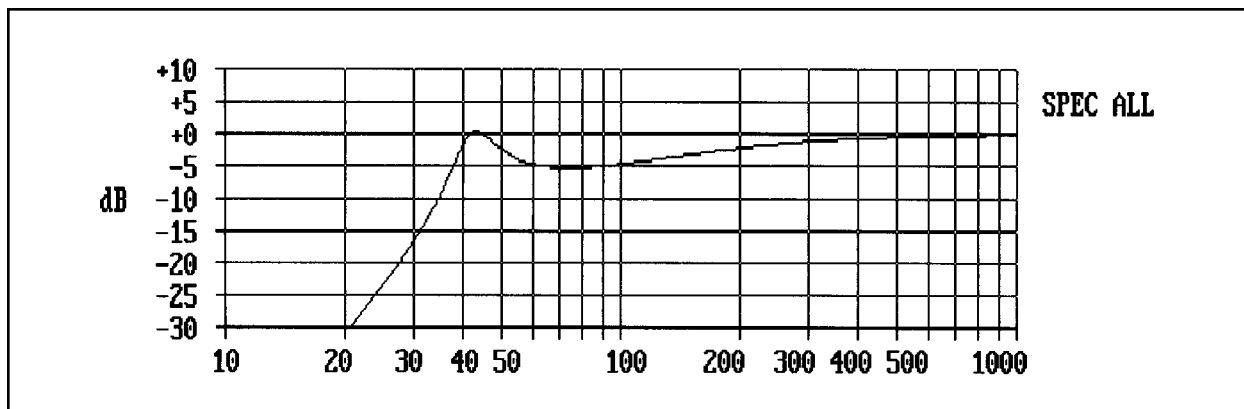


| | | | |
|----------------------------|--|-----------------------|-----------------------------------|
| Enclosure Volume: | $V_{BOX} = 2.75 \text{ ft}^3 \text{ (net)} + 0.15 \text{ ft}^3 \text{ (driver displacement)} + \text{port displacement}$ | | |
| Number of Ports: | 1 | 2 | 1 |
| Port Diameter: | 6.0 in | 4.0 in/ea. | 2.5 in x 12.5 in (rectangular) |
| Total Port Area: | 28.27 in ² | 25.13 in ² | 31.25 in ² |
| Port Length: | 18.28 in | 16.01 in/ea. | 20.44 in |
| Port Displacement (total): | .30 ft ³ | .23 ft ³ | .37 ft ³ |
| Total Box Volume: | 3.20 ft ³ | 3.13 ft ³ | 3.27 ft ³ |



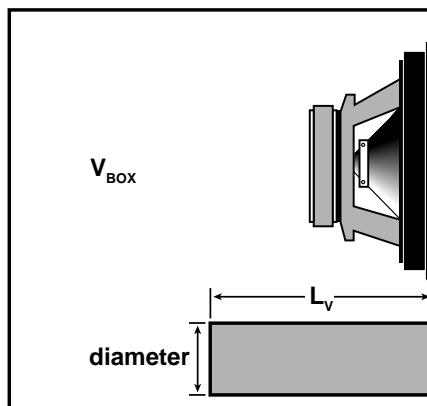
Stroker 12S Bass Reflex

Optimum Enclosure: 42 Hz Tuning - Max SPL



Enclosure Volume: $V_{\text{BOX}} = 2.75 \text{ ft}^3 \text{ (net)} + 0.15 \text{ ft}^3 \text{ (driver displacement)} + \text{port displacement}$

| | | | |
|----------------------------|-----------------------|-----------------------|------------------------------------|
| Number of Ports: | 1 | 2 | 1 |
| Port Diameter: | 6.0 in | 4.0 in/ea. | 3.25 in x 12.5 in (rectangular) |
| Total Port Area: | 28.27 in ² | 25.13 in ² | 40.625 in ² |
| Port Length: | 11.36 in | 10.60 in/ea. | 17.36 in |
| Port Displacement (total): | .18 ft ³ | .15 ft ³ | .41 ft ³ |
| Total Box Volume: | 3.08 ft ³ | 3.05 ft ³ | 3.31 ft ³ |

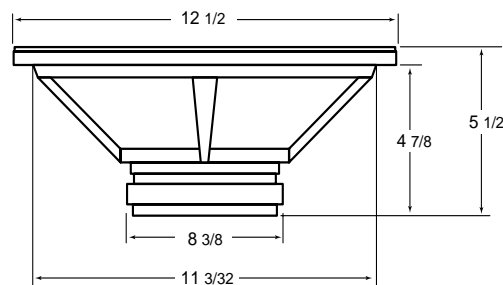


STROKER SERIES SUBWOOFERS

Stroker 12D

Stroker 12D Specifications

| | |
|---|-------------------------------|
| Diameter: | 12" |
| No. of Voice Coils: | 2 |
| Sensitivity (1W @ 1m): | 93 dB |
| Power Handling: | 500 Wrms |
| (cont. unclipped power per EIA RS-426A) | /ea. coil |
| Frequency Response: | 40 ~ 200 Hz |
| Nominal Impedance: | 4 Ω /ea. coil |
| Voice Coil Diameter: | 3" |
| Mounting Diameter: | 11 $\frac{1}{8}$ " (28.30 cm) |
| Mounting Depth: | 4 $\frac{7}{8}$ " (12.38 cm) |

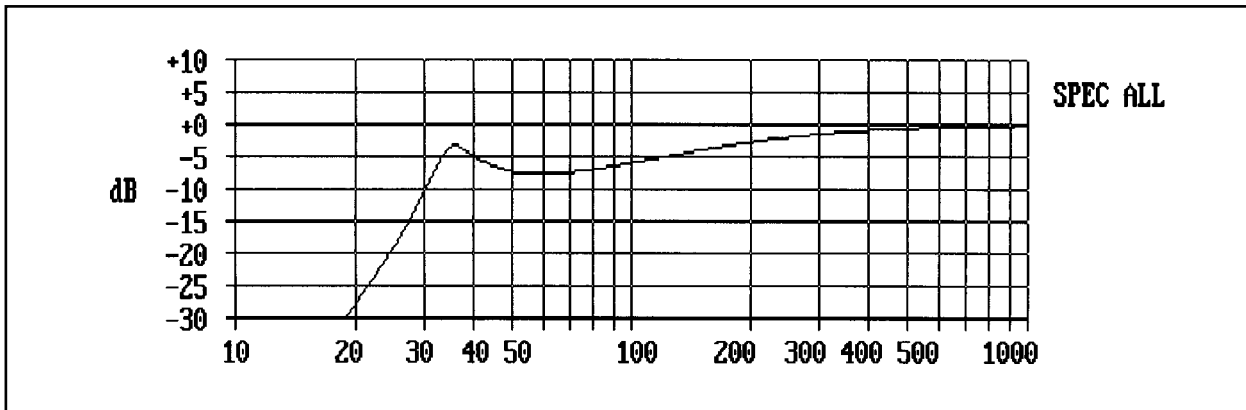


Stroker 12D Thiele-Small Parameters

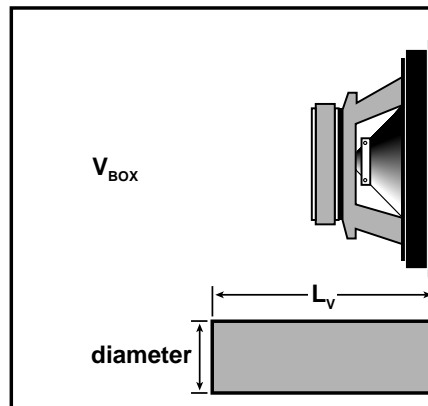
| | | |
|--------------------------------------|-----------|--|
| Free-Air Resonance: | f_s | 51 Hz |
| Total Q: | Q_{ts} | 0.237 |
| Mechanical Q: | Q_{ms} | 5.491 |
| Electrical Q: | Q_{es} | 0.248 |
| Compliance Volume: | V_{as} | .78 ft ³ |
| Maximum Excursion: (peak to peak) | X_{max} | 0.9" (± 0.45 ") 23 mm (± 11.5 mm) |
| Voice Coil DC Resistance: | R_{evc} | 3.3 Ω |
| Effective Cone Area: | S_d | 83.53 in ² |
| Driver Displacement: | | .15 ft ³ |

Stroker 12D Bass Reflex

Optimum Enclosure: 35 Hz tuning - Deep Bass

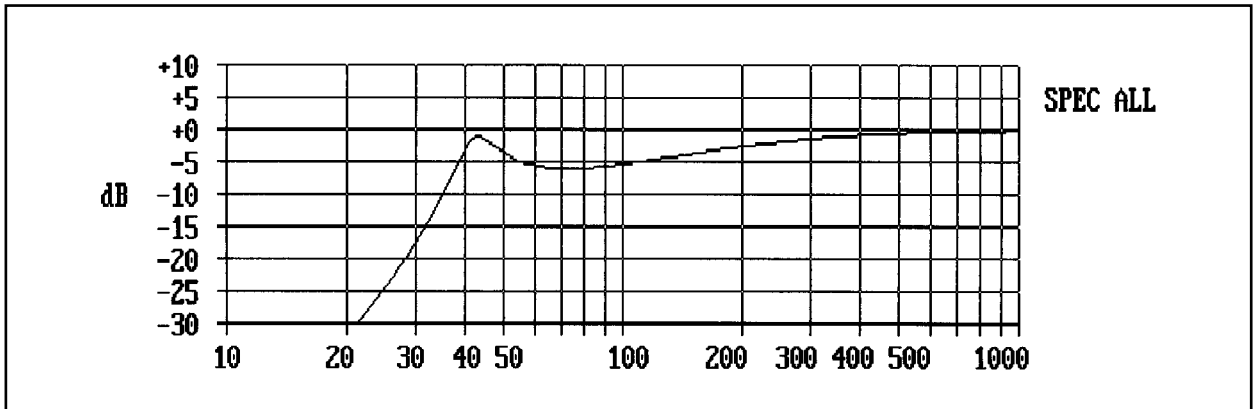


| | | | |
|----------------------------|--|-----------------------|-----------------------------------|
| Enclosure Volume: | $V_{BOX} = 2.75 \text{ ft}^3 \text{ (net)} + 0.15 \text{ ft}^3 \text{ (driver displacement)} + \text{port displacement}$ | | |
| Number of Ports: | 1 | 2 | 1 |
| Port Diameter: | 6.0 in | 4.0 in/ea. | 2.5 in x 12.5 in (rectangular) |
| Total Port Area: | 28.27 in ² | 25.13 in ² | 31.25 in ² |
| Port Length: | 18.28 in | 16.01 in/ea. | 20.44 in |
| Port Displacement (total): | .30 ft ³ | .23 ft ³ | .37 ft ³ |
| Total Box Volume: | 3.20 ft ³ | 3.13 ft ³ | 3.27 ft ³ |



Stroker 12D Bass Reflex

Optimum Enclosure: 42 Hz Tuning - Max SPL



| | | | |
|----------------------------|---|-----------------------|------------------------------------|
| Enclosure Volume: | $V_{\text{BOX}} = 2.75 \text{ ft}^3 \text{ (net)} + 0.15 \text{ ft}^3 \text{ (driver displacement)} + \text{port displacement}$ | | |
| Number of Ports: | 1 | 2 | 1 |
| Port Diameter: | 6.0 in | 4.0 in/ea. | 3.25 in x 12.5 in (rectangular) |
| Total Port Area: | 28.27 in ² | 25.13 in ² | 40.625 in ² |
| Port Length: | 11.36 in | 10.60 in/ea. | 17.36 in |
| Port Displacement (total): | .18 ft ³ | .15 ft ³ | .41 ft ³ |
| Total Box Volume: | 3.08 ft ³ | 3.05 ft ³ | 3.31 ft ³ |

